



[Support Home \(/\)](#)

[Mini and Other Cameras \(/other-cameras\)](#)

[Mini \(/mini\)](#)

How to Set Up Blink Mini

Follow these steps to add your Mini camera to a new, or existing Blink system.

1. On the Blink app Home screen, tap the + icon in the top right corner.

Protect What
Matters Most

Affordable Smart Home
Security Cameras








SHOP BLINK



2. Tap the Blink mini camera as indicated by an arrow in the image below. You are taken to the "Scan QR Code" screen, where your camera may request permission to scan the QR code. This is a way to enter the serial number automatically. You may enter the number manually instead. After the device is recognized, it needs a system.

By adding a device, you agree to Blink's [Terms of Service](#) and all the terms found [here](#). (<https://support.blinkforhome.com>)

-  **Blink wireless camera system**
Start with a Sync Module then add wireless cameras
-  **Blink wireless camera**
Add to an existing system (requires a Sync Module)
-  **Mini camera**
Always-on wired camera
-  **Blink video doorbell**
Wired or wire-free video doorbell
-  **Camera Accessories**
(Requires a camera)

Capture the QR code on the device or enter the serial number manually.

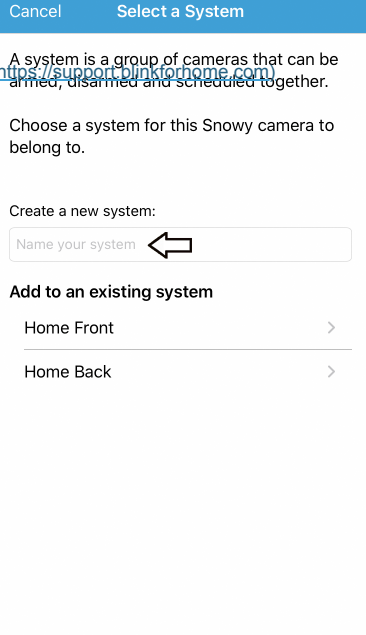


-  Sync Module
-  Mini Camera
-  Wireless Camera

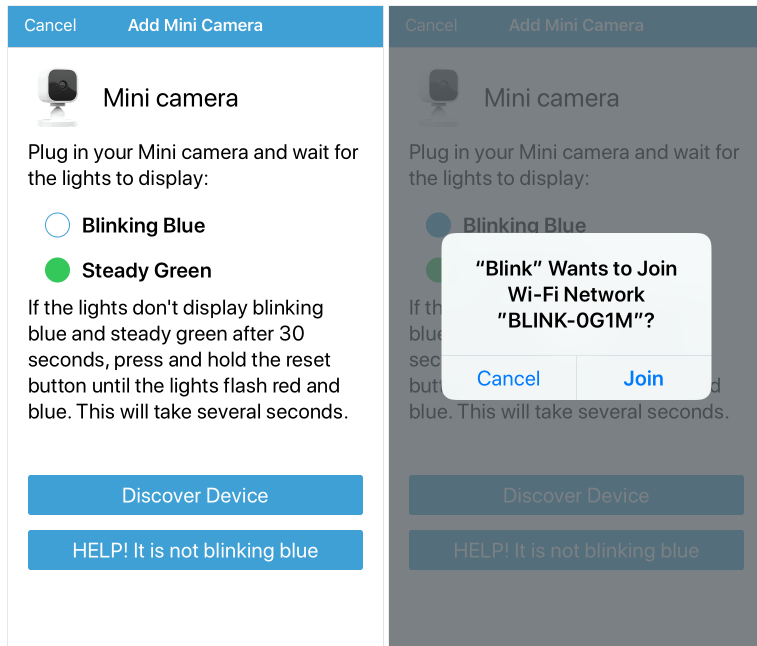
Where is the serial number? Tap to enlarge.

Note: If your camera does not focus correctly on the QR code, add more light to the scene, either with the camera flash or room lighting.

3. If you want to add the Mini to a new system, give your system a name in the text entry field, and it will be created. When adding the Mini to an existing system, just tap the system name to continue.



4. After selecting "Next", you will be instructed to connect your camera and wait for one light to flash blue and another to be solid green. If this is the case, tap "Discover device", and a connection request appears: "Blink" would like to establish a connection to the "BLINK-XXXX" network.

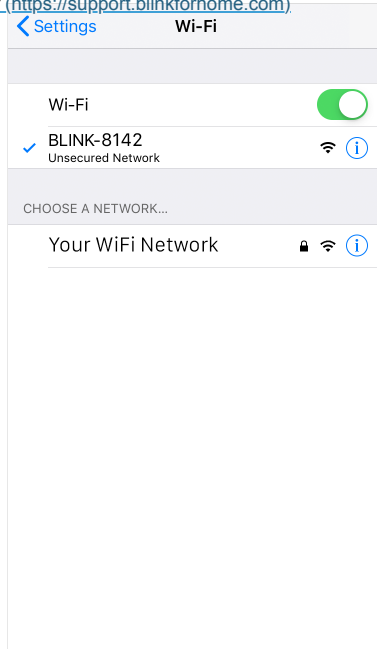


Note: If you don't see the above blinking blue light pattern, then you may need to reset the camera. [Click here \(/features-mini/mini-reset-button\)](/features-mini/mini-reset-button) for more information.

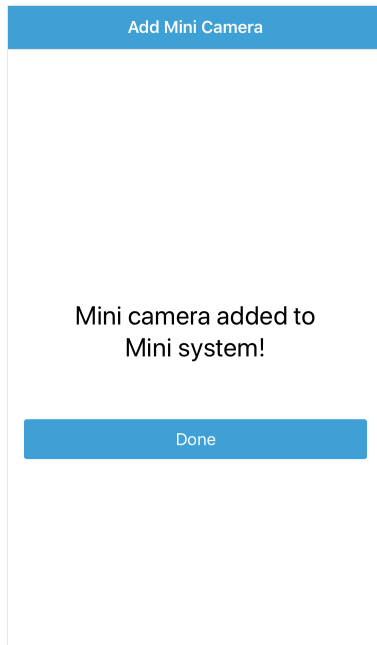


5. Tap "Join" and then choose your Wi-Fi network from the screen that appears. If you add the camera to an existing system, make sure you choose the same WiFi network that your other devices are connected to.

(<https://support.blinkforhome.com>)



6. When the Blink servers are ready, the Camera Added screen is shown. Tap **Done** to complete the setup and return to the app home screen.





an amazon company

Click here (/problemi-relativi-al-modulo-di-sincronizzazione/unable-to-connect-to-sync-module-when-setting-up-devices) if you receive an error "Unable to Connect to Sync Module" when adding cameras to a system.

(https://support.blinkforhome.com)

NEW: WiFi issues with setup, disconnections, or quality problems? Try our new WiFi fixing app before contacting support.*



(https://apps.apple.com/us/app/routethis-helps/id1173976362)



(https://play.google.com/store/apps/details?id=com.routethis.networkanalyzer&hl=en_GB)

*You will be asked to provide a code before running the test. Enter in the code "BLNK".

Give feedback about this article

Related Questions:

Blink Cameras Region Locking (/spotlight/blink-region-locking)

Currently, the new Blink products are available in North America,.....

Blink Mini FAQ (/mini/blink-mini-faq)

What is Blink Mini? The Blink Mini is an indoor,.....

Blink Storage Options (/before-you-begin/blink-storage-options)

Storage options depend on the equipment and services you have.....

Can't find what you're looking for?

CONTACT SUPPORT (HTTPS://BLINKFORHOME.KUSTOMER.HELP/CONTACT/SUPPORT-HJLZZVBIH)



an amazon company

Main

Home (https://www.blinkforhome.com/)

Products

(http://www.blinkforhome.com/products)

Support (http://support.blinkforhome.com/)

About Blink

About Us (http://www.blinkforhome.com/about-us)

Careers (https://www.amazon.jobs/en/search?

base_query=blink&loc_query=)

Be the first

to learn about promotions, new products, updates and more!



an amazon company

Contact Us

(<http://www.blinkforhome.com/contact-us>)

Video Storage Options (Video Storage)

Shop Now ([https://s.amazon-](https://s.amazon-adsystem.com/click?cb=&d=forester-)

[adsystem.com/click?cb=&d=forester-](https://s.amazon-adsystem.com/click?cb=&d=forester-)

[did&dsig=AUqALrWfCAbrwyPoTgwC2bSMsXbTsaz5G7MTpW0Cstt05&ex-](https://s.amazon-adsystem.com/click?cb=&d=forester-)

[fargs=1JDhLkbwBT0wZjkbLf-](https://s.amazon-adsystem.com/click?cb=&d=forester-)

[NDvLgGuA64DZPIRi4i0n-](https://s.amazon-adsystem.com/click?cb=&d=forester-)

[tlywp6FnFkRXbOORE24hzXm70BdoiONuygQXJ79E3XGOn-](https://s.amazon-adsystem.com/click?cb=&d=forester-)

[TVXSQ_k-1Lx8v4&ex-](https://s.amazon-adsystem.com/click?cb=&d=forester-)

[fch=4167913&rd=https%3A%2F%2Fwww.amazon.com%2Fblinkforhome](https://s.amazon-adsystem.com/click?cb=&d=forester-))

Customer Community

(<https://community.blinkforhome.com/>)

Legal Terms, Warranties, and Notices

(<https://www.blinkforhome.com/blink-terms-warranties-and-notices>)

Customer Security

(<https://blinkforhome.com/report-a-security-issue>)

* indicates required

Email Address *

Country

SUBSCRIBE

English (US) ▾

Search Navigatic